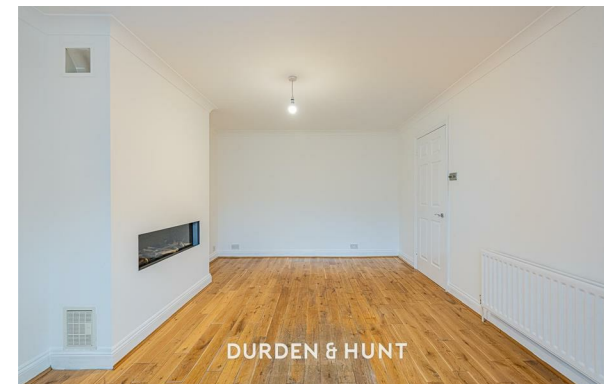


# DURDEN & HUNT

INTERNATIONAL



## Groveswood Place, Woodford Green IG8

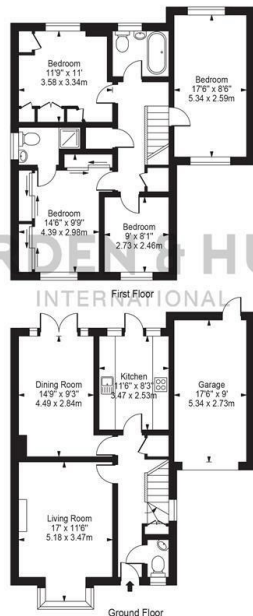
£2,750 Per Month

- Sought After Location
- Garage & Off Road Parking
- Modern Kitchen
- Three Additional Bedrooms
- Excellent Transport Links
- Good Sized Garden
- Downstairs WC
- Detached Family Home
- Living Room & Separate Dining Room
- Primary Bedroom With En Suite

309 High Road, Loughton, Essex, IG10 1AL  
0203 026 0160

[loughton@durdenandhunt.co.uk](mailto:loughton@durdenandhunt.co.uk)  
<https://www.durdenandhunt.co.uk/>

Groveswood Place  
 Approx. Total Internal Area 1422 Sq Ft - 132.15 Sq M  
 (Including Garage)  
 Approx. Gross Internal Area Of Garage 157 Sq Ft - 14.58 Sq M



For Illustration Purposes Only - Not To Scale

This floor plan should be used as a general outline for guidance only and does not constitute in whole or in part an offer or contract. Any intending purchaser or lessee should satisfy themselves by inspection, searches, enquiries and full survey as to the correctness of each statement. Any areas, measurements or distances quoted are approximate and should not be used to value a property or be the basis of any sale or let.

## Viewings

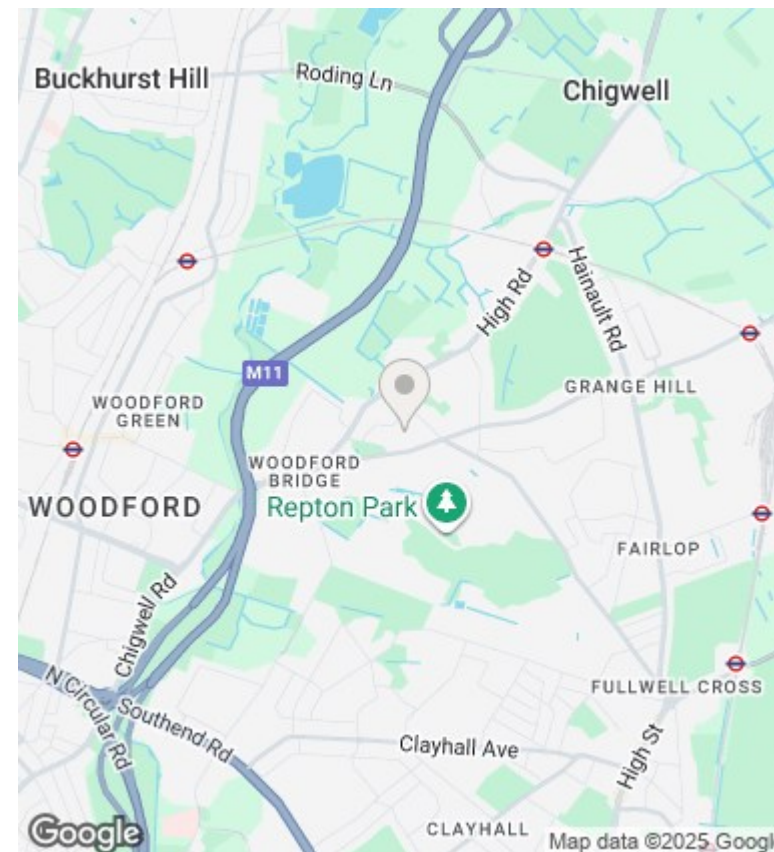
Viewings by arrangement only. Call 0203 026 0160 to make an appointment.

## Council Tax Band

F

## EPC Rating:

D



Energy Efficiency Rating		
	Current	Potential
Very energy efficient - lower running costs		
(92 plus) <b>A</b>		
(81-91) <b>B</b>		<b>82</b>
(69-80) <b>C</b>		
(55-68) <b>D</b>	<b>66</b>	
(39-54) <b>E</b>		
(21-38) <b>F</b>		
(1-20) <b>G</b>		
Not energy efficient - higher running costs		
<b>England &amp; Wales</b>	EU Directive 2002/91/EC	